

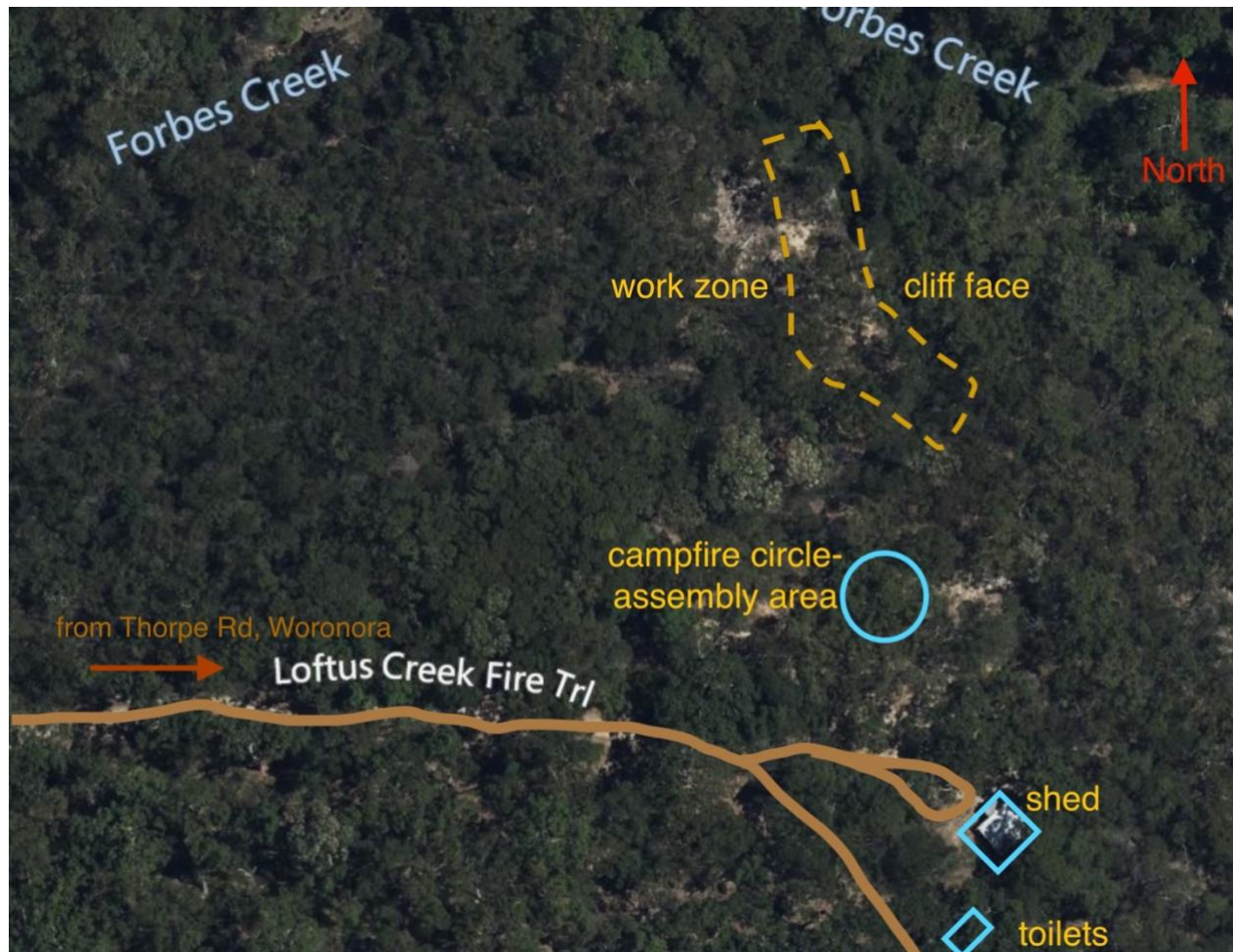
# Noorumba Site Specific

## Risk Assessment and Management

1<sup>st</sup> Feb2025-1/2/2026

*See also RockSchool Contingency Plans*

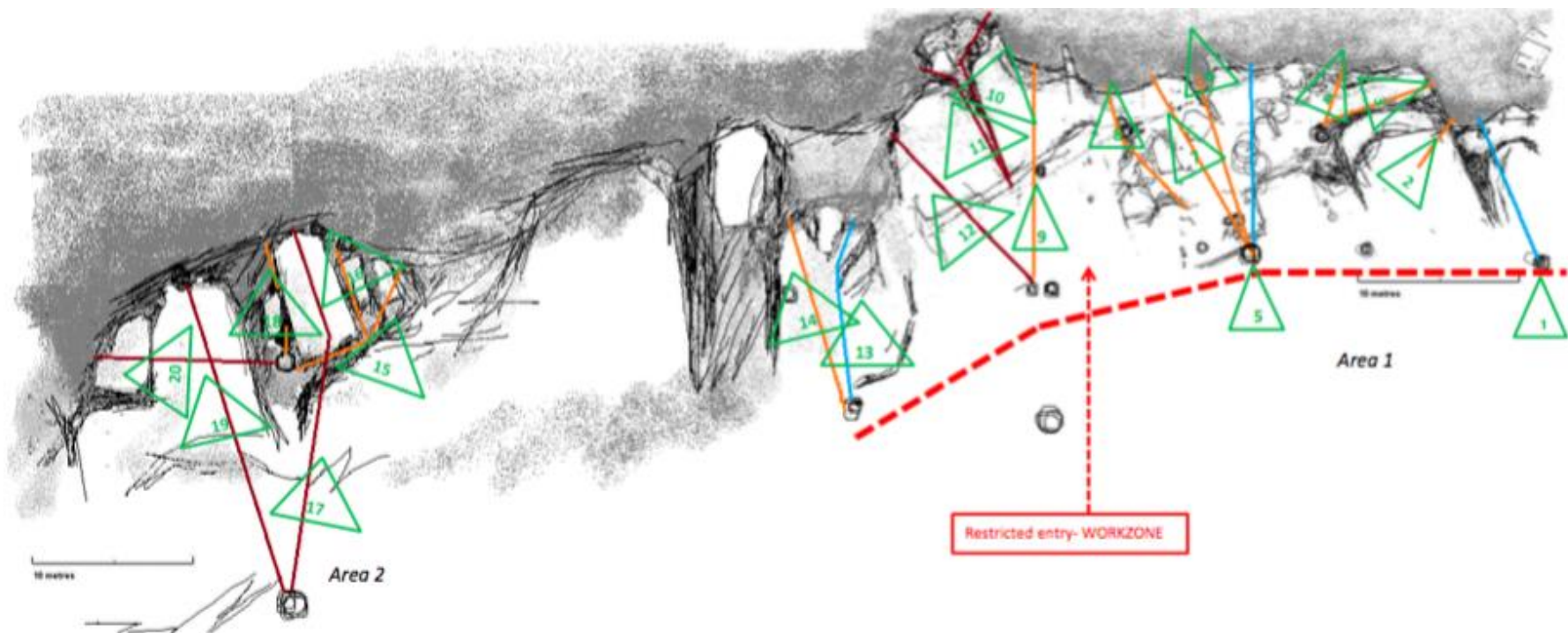
### 1. Site Plan and locations



**Noorumba** is a bush campsite between Forbes Creek and Loftus Creek near Woronora, NSW on crown land. It is administered by Girl Guides Australia, (NSW,ACT and NT).

Use of the campsite incurs a fee, but can be booked by people in Guides or Scouts.

LOCATION	HAZARD	RISK	MITIGATION	RESPONSIBLE
1. driveway	Uneven ground Fallen trees	Trips and falls	Participant awareness that this is a natural environment	Participant's leaders
2. campfire circle-assembly area	Vandalism, broken glass, ants and other insects	Cuts, scratches, bites	Preliminary clean-up before participants arrive Engage participants in awareness	RS staff and leaders
3. Facilities	Shed – secure locking system	difficulty unlocking resulting in pinched fingers	Care by operator	RS staff/operator
	Toilets – vandalism, blockages	Unable to be used until cleared	Cleaning and flushing before participants arrive Remind participants that <b>only</b> their excretions and toilet paper can be flushed, everything else in bins provided.	RS staff All participants Camp Manager
	Water supply impacted	Break in water pipes, no water available.	Contact those who have booked in – and inform them of issue – and alternative access, or bring more water than they had been prepared for.	Staff and leaders, Camp manager
4. RockFace	Work zone - unstable debris, rocks and tree stumps	trips and falls,	Declared work-zone and barrier erected Operational rules within zone: only skilled staff with PPE allowed inside	Arrange for assembly and evacuation below.
	Waiting areas	Distractions, natural hazards	Supervision by responsible adults and leaders with participants	Leaders and adults attending with participants
	"drops" – see map appendix Inattentiveness, distraction	Falls, grazes Not doing as instructed, and putting self and other at risk	Clear instructions, "Time out" for serious misdemeanours	Leaders, RS staff
5. Emergencies	Signals agreed (at site induction)	Signals not remembered or misunderstood	Long whistle or car horn, STOP WHAT YOU ARE DOING, and wait. Rapid short bursts – ASSEMBLE AT THE CAMPFIRE CIRCLE IMMEDIATELY and await instruction.	RS staff, site supervisor
	Need to contact responding agencies (eg police, fire, ambo)	Difficulty communication with responding agencies	<b>Assess situation: If indicated, call for help</b> (ambulance and/or police) The site has mobile phone coverage. Location is Noorumba Guide Camp on Thorp Rd Fire Trail requiring 4WD, but someone will be sent to the Thorp Rd gate to lead them in. Rescue / recovery, provide first aid	RS staff, site supervisor
6. Access routes	Unacceptable fire risk or winds	Early evacuation is required	Assemble party, account for all attendees. Leave via one of four possible evacuation routes (Thorpe Rd Fire Trail, Track to Croston Rd, Fire Trail to Loftus or Kingswood Fire Trail)	



Drop number	name	area	drop ht	length to anchor	total length plus knots
11	Kevin's Crack	1	18	9	27
12	Explorer	1	20	9	29
13	Bower	1	5.3	10.8	16.1
14	Bucket List	1	7	10.8	17.8
15	Janice's Maze	2	8.7	5.4	14.1
16	Kenso Climb	2	8.8	7.9	16.7
17	Jim's Block	2	12	15	27
18	The Cave	2	6.6	8	14.6
19	Marion's Folly	2	13.5	18	31.5
20	Minnie's Magic	2	10	8.8	18.8

Drop number	name	area	drop ht	length to anchor	total length plus knots
1	Fork	1	8.2	8.6	16.8
2	Spoon	1	8.2	4.1	12.3
3	Knife	1	8.1	4.9	13
4	Photo Ledge	1	13.1	5.2	18.3
5	Gillian's Jump	1	14.2	9.4	23.6
6	Mug	1	16	9.2	25.2
7	Ron's Run	1	16	9.7	25.9
8	Pete's Point	1	16	10.5	26.5
9	The Bowl	1	17	12	29
10	Bob's Balcony	1	17	9	26